

# Topography Station

## ts-100-100

optical triangulating laserscanner  
for 100 cm x 100 cm surface area

### **An Instantaneous optical triangulating laser-scanner to Measure Soil Surface Microtopography**

Microtopography and roughness are highly dynamic properties of the soil surface and important factors governing surface runoff and erosion processes. Our in-situ measurement system of two-dimensional high-resolution (1 mm) laser scanning can provide high-resolution roughness profile of soil surface roughness, under wide circumstances suitable to generate high-resolution datasets on spatio-temporal and multi-scale microtopography patterns and to advance the understanding of surface processes at small scales in natural environments.

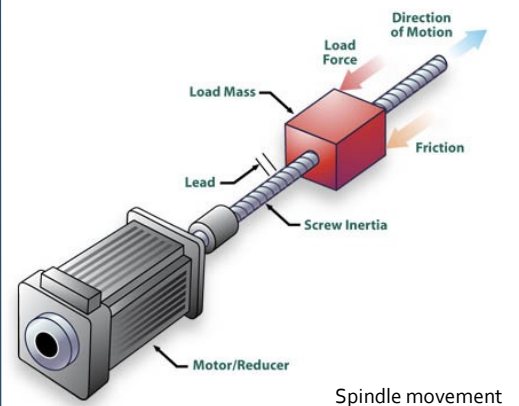


# Photronics4Work

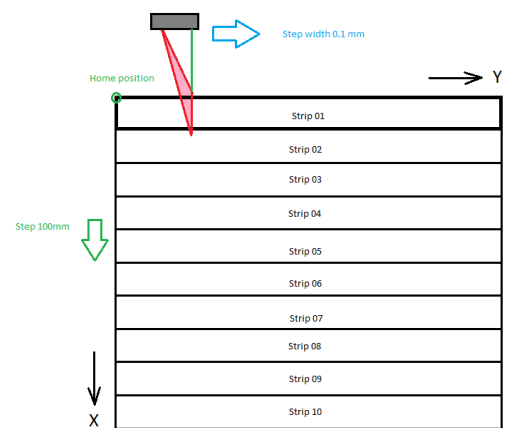
## ts-100-100

### Specifications of Topography Measurement System

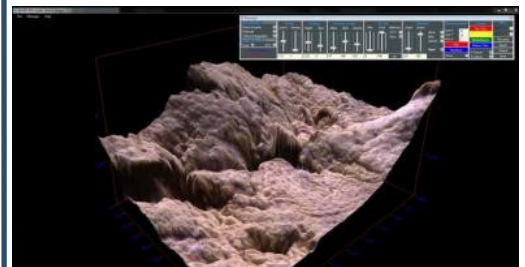
- Mechanical structure including 4 tripods for stable placement
- XY placement by 2, 1 meter spindels with high accuracy encoders for exact placement
- Electronics to control movement
- Laser based triangulation system
- Software to control the x—y placement
- Temperature controlled camera and laser for extended operation temperatures
- Documentation
- 12v / 24v Battery operated system
- The 3D measurement functions allow the user to obtain an accurate and detailed profile of any target.
- Software output of profile, in STEP and ASCII, or any other file open format. (if special file format is wished let us know)
- Including laptop with pre-installed software, English operating system.
- Measurement files can be transferred for analyzing.
- Warranty 12 months after delivery
- Operation condition:
  - Temperaturerange: 0 .... 60 degr C
  - Humidity:0 .... 80% (above dewpoint)



Spindle movement



Movement of X—Y scanner



Software presentation of profile